

**Manual Addendum: CD-45G-PRO, CD-45G-50-PRO**

**NOTE:** KEEP THIS SHEET & ATTACH TO CD-45G MANUAL (4-0705).

The -PRO models are custom variations of the standard ozone generators. They include a 4-20mA control assembly and revised wiring. This addendum is intended as a supplement only. Refer to the CD-45G Manual (4-0705) for a complete explanation of Ozone Generator operation.

Replace the sections in manual 4-0705 with the correlating sections below:

**3B. Normal Operation**

5. If the unit is configured for 4-20mA control (-PRO models only) the unit will not produce ozone without an external 4-20mA control signal connected to the unit. See section 4A-3.17. for more detail.

**4A-3. Remaining Internal Components**

**17. 4-20mA Control (optional)**

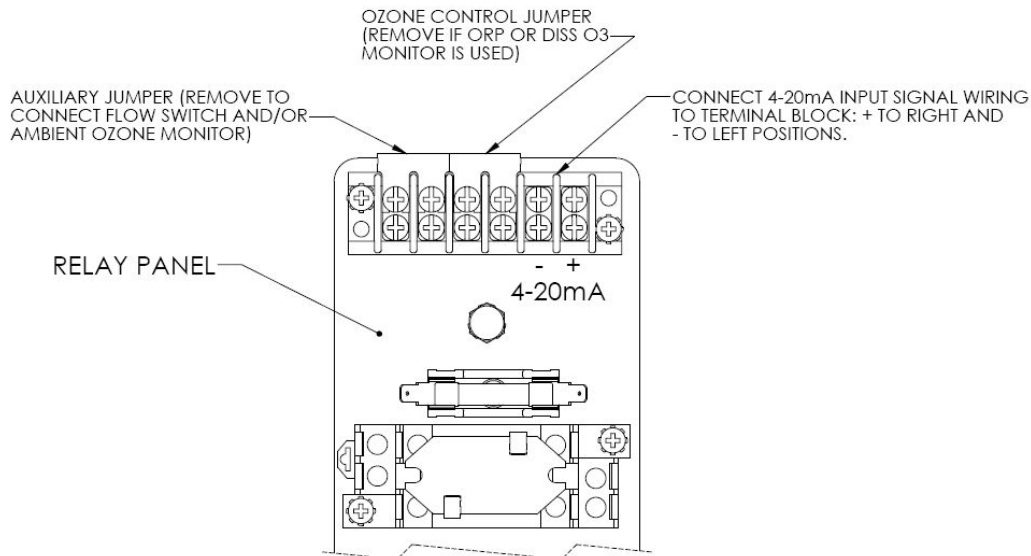
Standard 2-wire control system designed to accept a 4-20mA signal and proportionally scale ozone generator output (0-100%). The input is connected at terminal block one (TB1). See Figure 3b for more detail. *Note: the unit will not produce ozone without an external 4-20mA control signal connected to the unit.*

**4-20mA Input:**

SPECIFICATION	VALUE
INPUT IMPEDANCE	400 Ω
FUSE RATING	31mA, Fast-Acting

*Table 1: Electrical Ratings for 4-20mA External Control Signal*

1. Connect the 2-wire 4-20mA signal to the 4-20mA input + and – terminals at TB1.
2. Use the shortest wire route possible.
3. Use shielded wire.
4. Ground at the transmitter source only. **DO NOT** ground the shield at the terminal block input.
5. Avoid noise problems by routing cable away from noise sources such as motors, high-current switches, transformers, and AC wires.



**Figure 3b: Connection Details for External Control Devices (-PRO models only)**